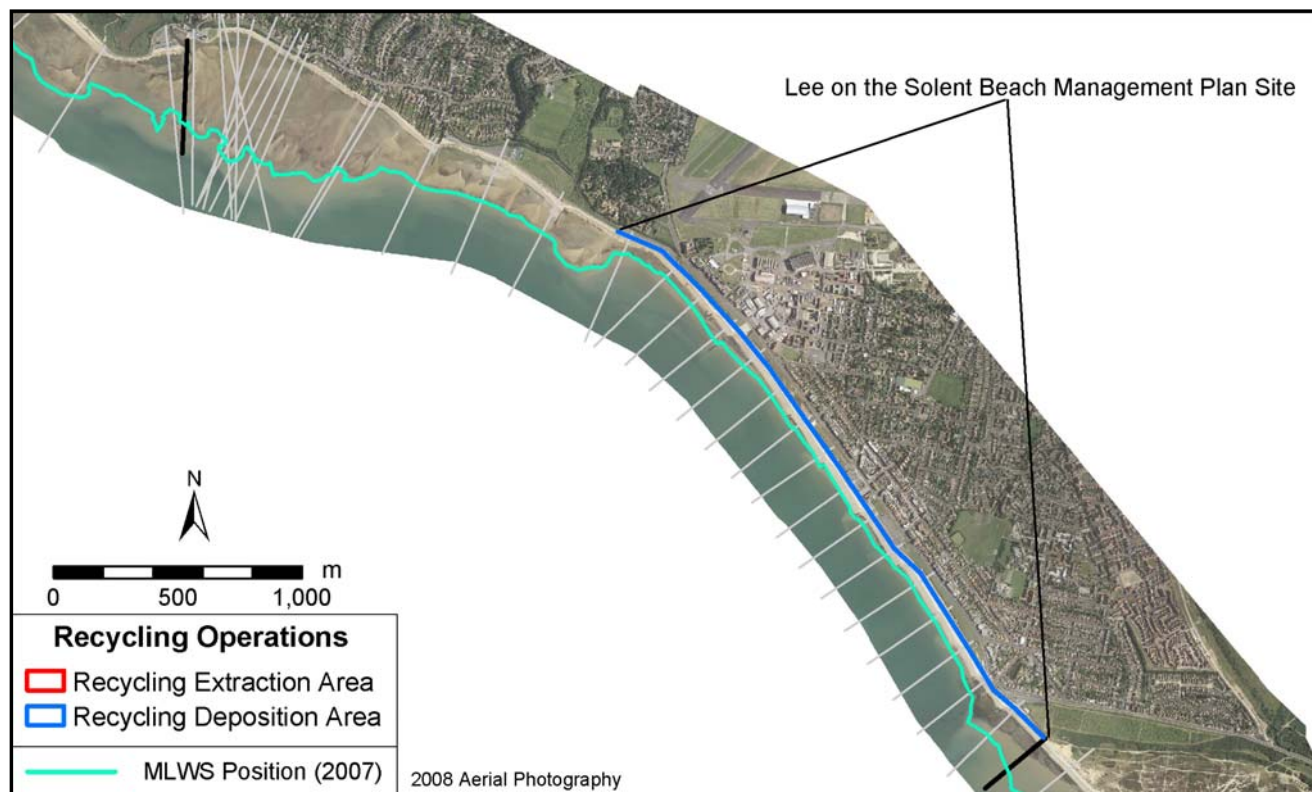


Policy Unit: 5b CPU12

Lee-on-the-Solent to Hill Head Harbour

Topographic Beach Profiles 5b00163 – 5b00252



Summary

The Lee-on-Solent section of shoreline has a recharged, gravel beach with a seawall and timber and rock groynes. Towards Hill Head harbour, the muddy/sandy inter-tidal foreshore widens to around 600m. In 1997, the beach at Lee-on-Solent was re-nourished with ~300,000m³ of gravel dredged from the main navigation channel in Southampton Water.

Survey Regime

Survey type	Frequency	Profile spacing/survey extent
<i>Topographic baseline</i>	Annual (BMP site)	50m to MLWS
<i>Topographic interim profile</i>	Spring and Autumn	150 - 300m to MLWS
<i>Bathymetry</i>	5 years	50m profiles, MLWN to 1km offshore
<i>Ortho-photography</i>	5 years	MLWN
<i>Non-rectified aerial photography</i>	Annual	MLWN
<i>Lidar</i>	5 Years	MLWN
<i>Habitat mapping</i>	5 Years	Extent of aerial photography

Summary of beach operations

Date	Operation	Quantity (m ³)	Location/Notes
1997			
July	Beach re-nourishment scheme	307,969	Beach Management plan site (between profiles 5b00563 – 5b00213)