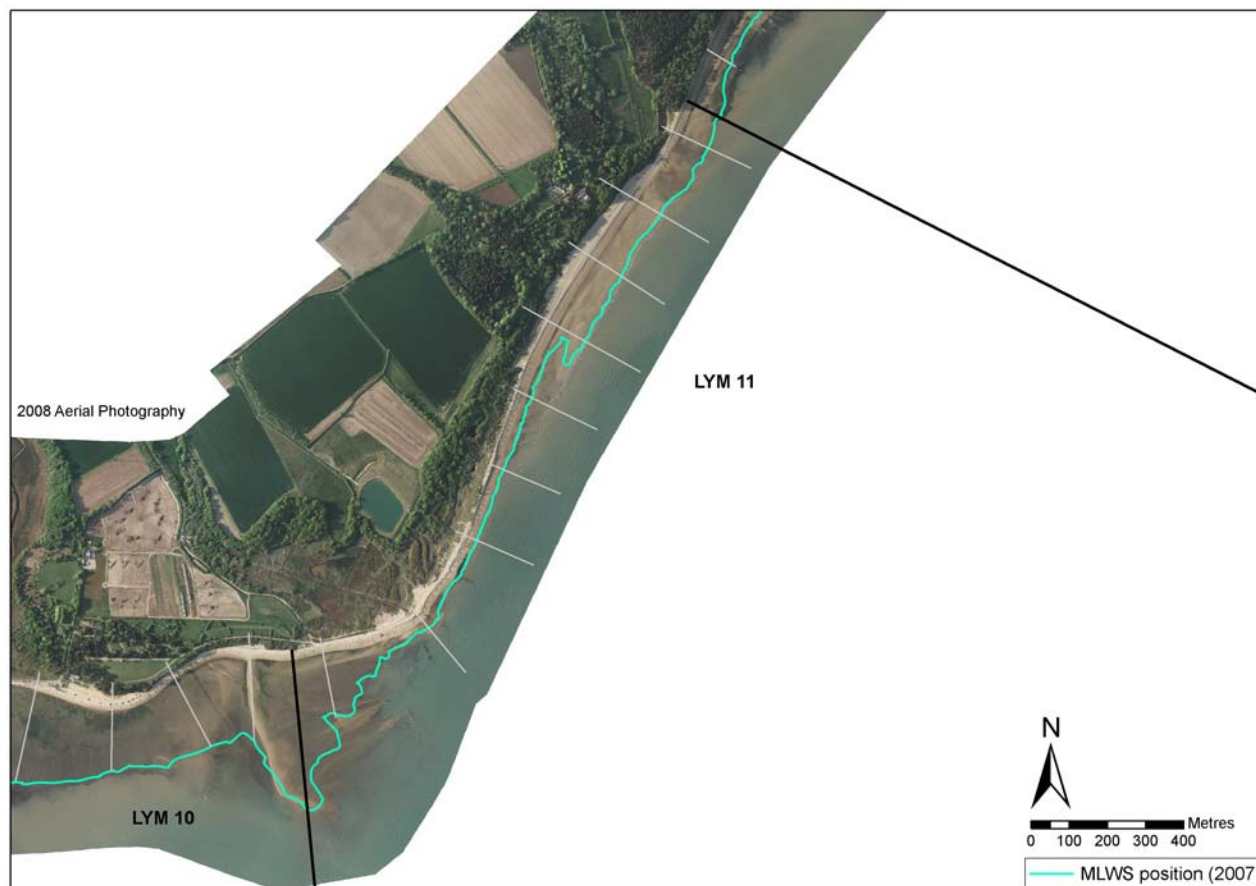


## Policy Unit: 5c LYM11

### East of Stone Point to south of Bourne Gap

Topographic Beach Profiles 5c00340 – 5c00306



#### Summary

This unit consists chiefly of a steep shingle beach with a narrow foreshore of gravels and sands extending up to 100m seaward. Softwood timber groynes extend along the entire unit. At the eastern end of the unit are some historic wartime remains fronted by a narrow gravel and rock beach. Erosion along this segment has formed low, discontinuous cliffs at Stone Point extending northwest to Bourne Gap. There is a low-lying hinterland behind the shingle beach at Bourne Gap which includes areas of designated freshwater habitat.

#### Survey Regime

Survey type	Frequency	Profile spacing/survey extent
<i>Topographic baseline</i>	5 years	50m to MLWS
<i>Topographic interim profile</i>	Spring and Autumn	200-300m to MLWS
<i>Bathymetry</i>	5 years	50m profiles to 1km offshore
<i>Ortho-photography</i>	5 years	MLW
<i>Non-rectified aerial photography</i>	Annual	MLW
<i>Lidar</i>	5 years	MLW
<i>Habitat mapping</i>	5 Years	Extent of ortho-photography