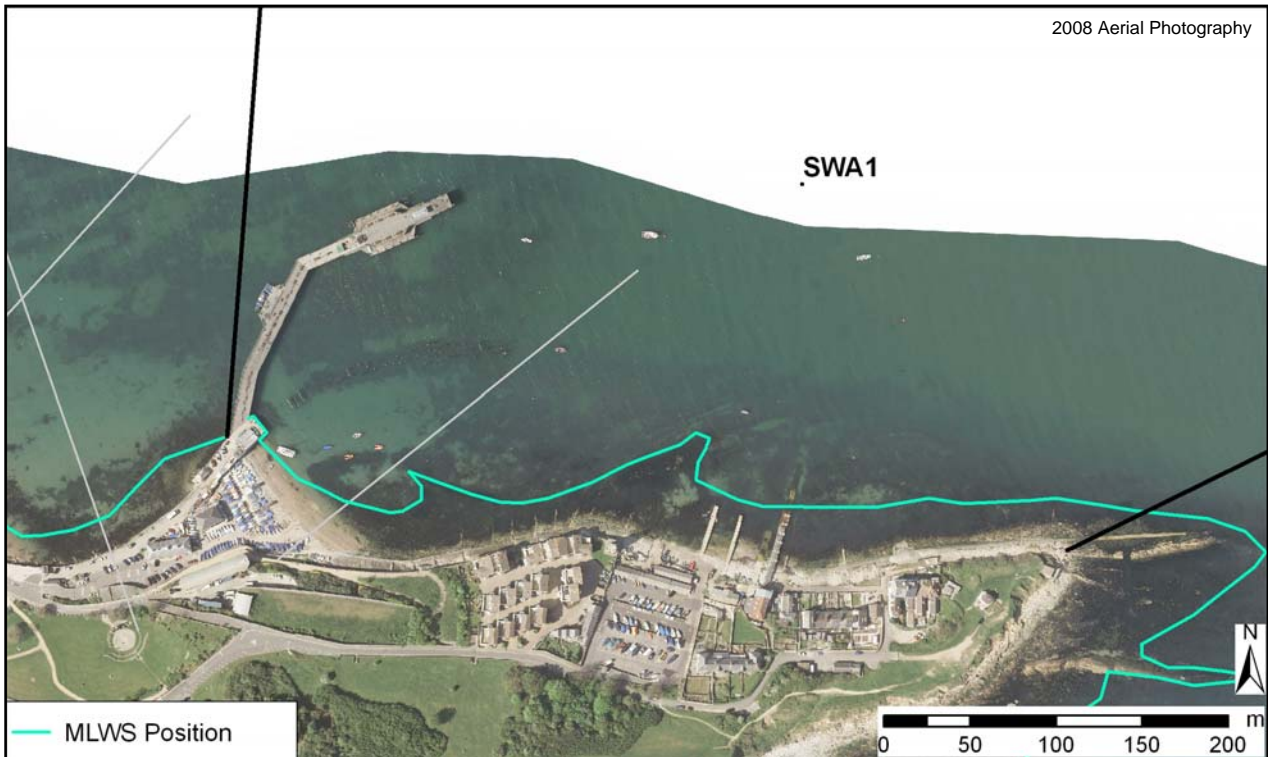


Policy Unit: 5f SWA1

Swanage Pier to Peveril Point

Topographic Beach Profiles 5f00771 to 5f00773



Summary

This policy unit consists of the rocky headland at the southern end of Swanage Bay, stretching from Peveril Point to Swanage Pier. There is a small mixed (sand and gravel) beach immediately east of Swanage Pier, less than 100m in length. Further east, there are several small rock groynes backed by a concrete seawall, some watercraft slipways and Swanage Lifeboat station.

Survey Regime

Survey type	Frequency	Profile spacing/survey extent
<i>Topographic baseline</i>	-	-
<i>Topographic interim profiles</i>	Spring and Autumn	1 profile to MLWS
<i>Bathymetric baseline</i>	5 years	50m spacing to 500m offshore
<i>Ortho-photography</i>	5 years	MLW
<i>Non-rectified aerial photography</i>	Annual	MLW
<i>Lidar</i>	3 years	MLW
<i>Habitat mapping</i>	5 years	Extent of ortho-photography